



## Emergency Response Plan

The purpose of this plan is to make all employees aware of their respective roles in the event of an unforeseen disaster striking Centennial Plastic. Emergencies will range in scope as will the response to them. They could include fire, flood, or weather event as well as power outage, building impact, explosion or chemical spill or release. Assessing the nature of the emergency quickly and responding to it appropriately is the responsibility of all of us.

### Emergency Operations Coordinator

**Chris Rhind**

(905)-823-4090 ext 24

crhind@centennialplastic.com

### Secondary Emergency Contact

**Troy Lauzon**

(905)-823-4090 ext 30

tlauzon@centennialplastic.com

## Emergency Call

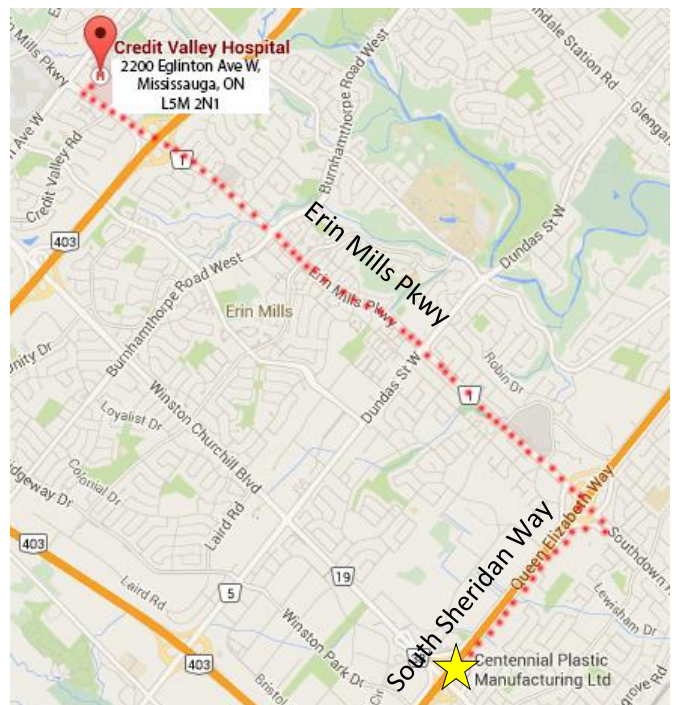
When should you call 9-1-1? Call 9-1-1 when you need police, fire or paramedic services to respond immediately to:

- **A fire**
- **A medical emergency**
- **A crime in progress**

### Nearest Emergency Facility:

#### **Credit Valley Hospital**

2200 Eglinton Ave W, Mississauga, ON L5M 2N1  
(view map on right)





## Emergency Equipment

Centennial Plastic has full sprinkler system throughout the building which is annually tested by Aqualine Fire. We also have two 100 foot fire hose systems located on the centre beams at the front and back of the warehouse. Additionally we have fire extinguishers located throughout the building as identified on the attached drawing on page 6 as well as ALL forklifts.



Hose located at front and back of warehouse

### How to Use a Fire Extinguisher



1. Pull the pin
2. Aim the hose
3. Squeeze the handle
4. Sweep the extinguisher



## First Aid

We have a wall mounted first aid kit located in the Quality Management Office. We have a second back up first aid kit wall mounted in the centre office in the front (Chris Rhind's office) and the Tool Room.



## Eye Wash

We have a sink mounted eye wash system located on the wall mounted sink in the tool room beside the washroom.

\*location on map shown on page 6

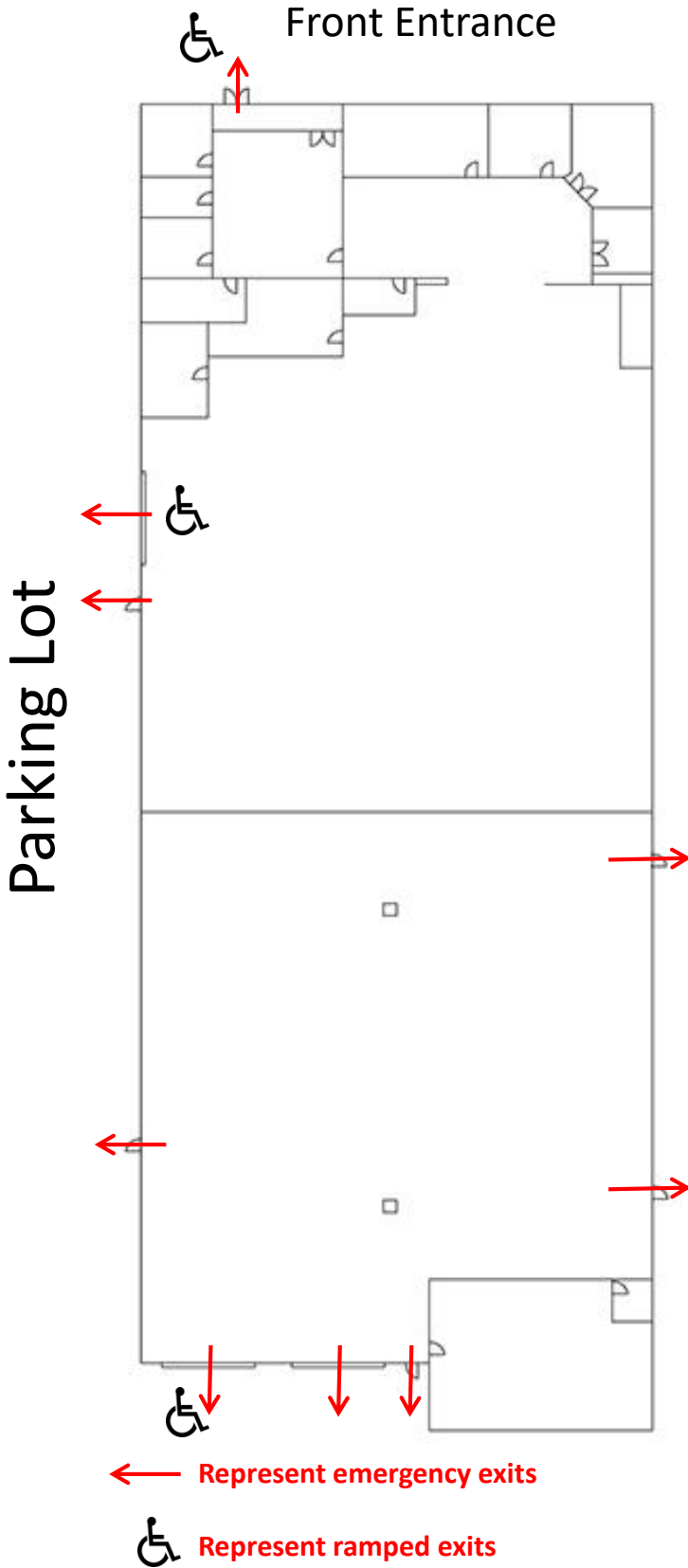


### Emergency Exits

Centennial Plastic has a total of nine exit locations including the shipping doors. Each is located on the drawing. In the event of emergency requiring evacuation of the building, employees are to leave in an organized manner from exit closest to them and reassemble in the rear parking lot area on the grass between Centennial and Dahl Brothers next door. Please remain in that area until we have confirmed you are safe and have provided instructions on what to do next. See drawing for evacuation meeting area.



**EVACUATION MEETING AREA**





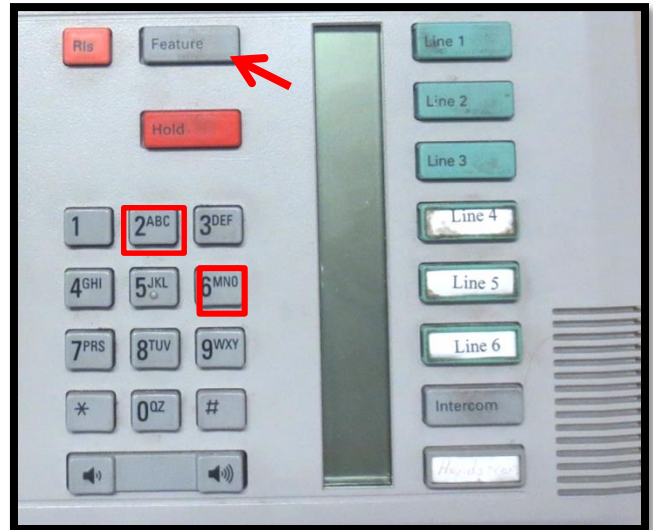
## Emergency Wardens

In the event of an emergency, shift supervisors will act as emergency wardens. Their responsibility will be to make sure that all employees are safely accounted for and to arrange for an organized evacuation of the building if that is required as well as confirming that all employees have left the building. Wardens will also be responsible for either contacting emergency authorities or assigning this task to one of the staff working in the office. In addition to supervisors our Joint Health and Safety representatives will assist in emergencies.

## Special Needs

Emergency wardens will be responsible for ensuring that any employee or visitor with special needs is assisted in their departure from the building to safe meeting area. This may include arm holding and guiding the visually impaired, or alerting those with hearing challenges, or assisting someone in a wheelchair to a ramped exit.

## The Phone System



To Use phones:

1. Lift receiver
2. Choose an available line
3. Dial the number

To make an announcement over the speakers:

1. Lift the receiver
2. Press: Feature 62
3. Make Announcement-Speak Loudly!



Please familiarize yourself with the attached drawing that shows locations indicated in this report.

← Emergency exits

♿ Ramped exits

★ Fire Extinguisher (also on all forklifts)

● Fire Hose

◆ Eye Wash Station

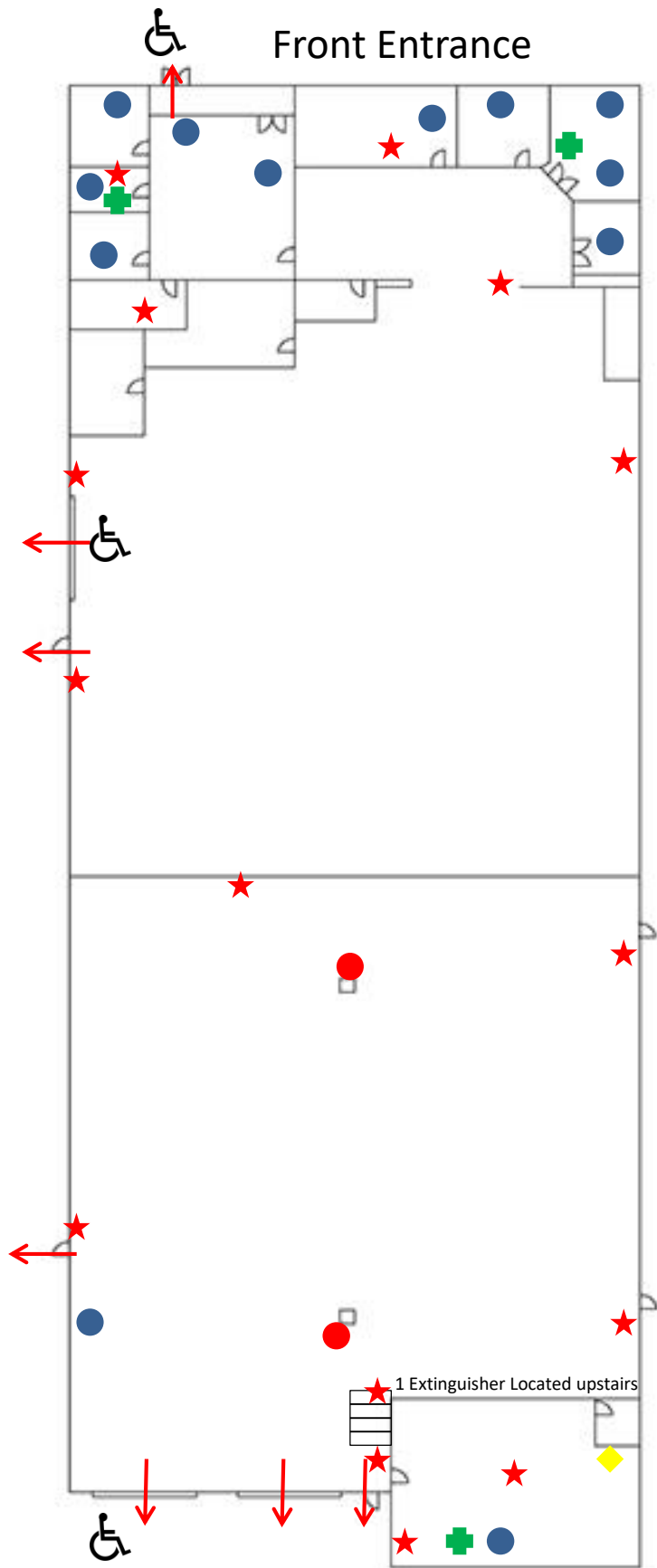
✚ First Aid

● Phones

**Review**

The joint health and safety committee will review our emergency response plan every year to insure that it is current and addresses any concerns.

Review Date:





**Centennial Plastic Mfg. Inc.**

Centennial Plastic Website:  
**[www.centennialplastic.com](http://www.centennialplastic.com)**

In the event of a serious emergency that will affect operations, updates will be posted on the Centennial Web page and list the address



**Centennial Plastic Mfg. Inc.**



[About](#) [Production](#) [Mold Making](#) [Quality](#) [Images](#) [Contact](#)

